

**MATERIALS**

- BODY:  
Phenolic, UL94 V-0
- ACTUATOR:  
Nickel Plated Brass
- BUSHING:  
Nickel Plated Brass
- HOUSING:  
Stainless Steel
- HARDWARE:  
Nickel Plated Steel
- FUNCTION PLATE:  
Stainless Steel
- SPACER PLATE:  
Laminate Board
- SPRING:  
Steel
- PLUNGER:  
Nylon
- MOBILE CONTACT:  
Silver Plated Copper
- MOBILE CONTACT PIVOT:  
Silver Plated Copper
- CONTACTS:  
Silver Alloy Clad Copper
- TERMINALS:  
Brass

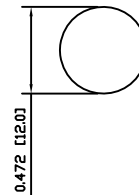
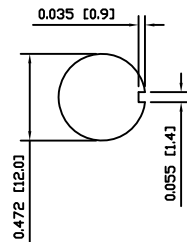
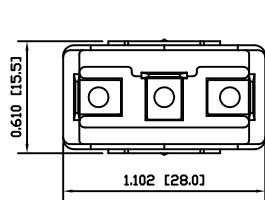
**SPECIFICATIONS**

- FUNCTION:  
1P2T ON-OFF-ON
- RATINGS:  
ANSI/UL1054 and CAN/CSA C22.2 No.55 (E194579):  
20A 125VAC [cURus]  
15A 277VAC [cURus]  
2HP 125/277VAC [cURus]
- CONTACT RESISTANCE:  
Initial: 50mΩ Max. at 50VAC
- INSULATION RESISTANCE:  
800MΩ Min. at 500VDC
- DIELECTRIC STRENGTH:  
1,500VAC for 1 Minute
- OPERATING LIFE:  
6,000 Cycles [cURus]
- TEMPERATURE:  
Operating: -20°C to 85°C [cURus]
- APPROVALS:

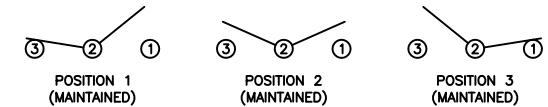


SUGGESTED PANEL CUTOUT

ALTERNATE PANEL CUTOUT



SCHEMATIC



ACTUATOR	A	09/05/26	CAB
BODY	A	09/05/26	CAB
MATERIALS	A	09/05/26	CAB
SPECIFICATIONS	A	09/05/26	CAB
REFERENCE	REV.	DATE	BY

THE INFORMATION CONTAINED IN THIS DOCUMENT IS PROPRIETARY TO E-SWITCH AND IS NOT TO BE COPIED OR TRANSFERRED

A	INITIAL RELEASE	18847	10/02/05	CAB
REV.	DESCRIPTION	PCR	DATE	DRAWN BY

DIMENSIONS	
INCHES [MILLIMETERS]	
GENERAL TOLERANCES	
±0.008 [±0.2] / ±1'	
SCALE	PROJECTION
DRAWING NOT TO SCALE	1st Angle

ST145D10		
ITEM NUMBER	DATE	REVISION
34-ST145D10	FEBRUARY 5, 2010	A